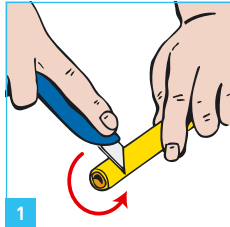
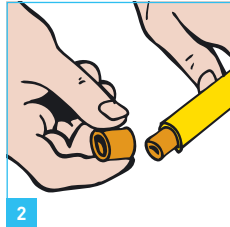


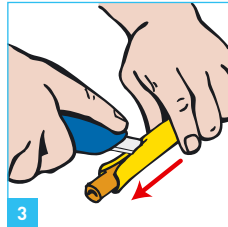
Plastic Coated Copper Tube Installation Guide



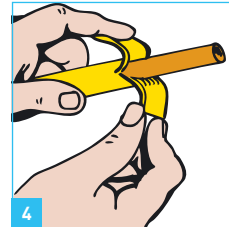
1 Make circular incision in plastic cover



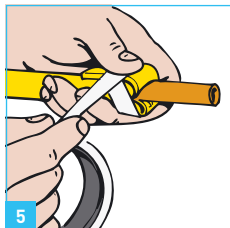
2 Remove the cut plastic from the end of the tube



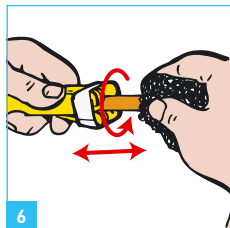
3 Make the incision in plastic along tube



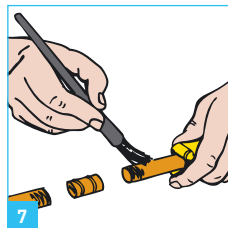
4 Peel back the plastic cover carefully



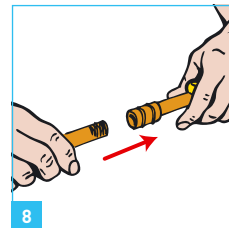
5 Secure the spliced plastic cover with tape



6 Clean tube and fitting with a suitable abrasive pad



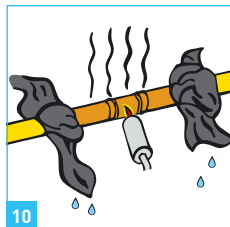
7 Apply Flux



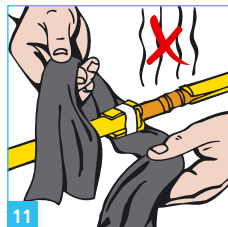
8 Connect tube and fitting



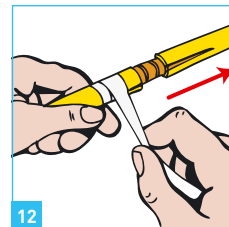
9 Wrap exposed plastic with a damp cloth



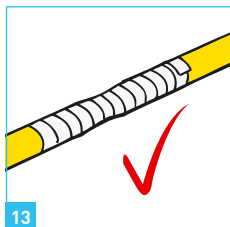
10 Heat with blow lamp



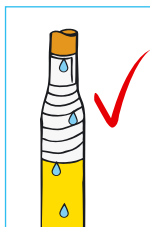
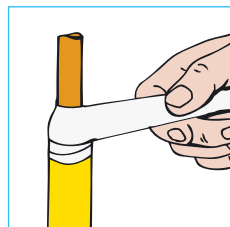
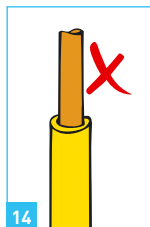
11 When cooled remove damp cloth and re-position plastic



12 Secure with tape



13 The finished joint



14 Exposed ends should be sealed with tape