

# LAWTON

TUBES

*The nations copper specialist*



## Plumbing Catalogue Version VII



Telephone: +44 (0)24 76466203

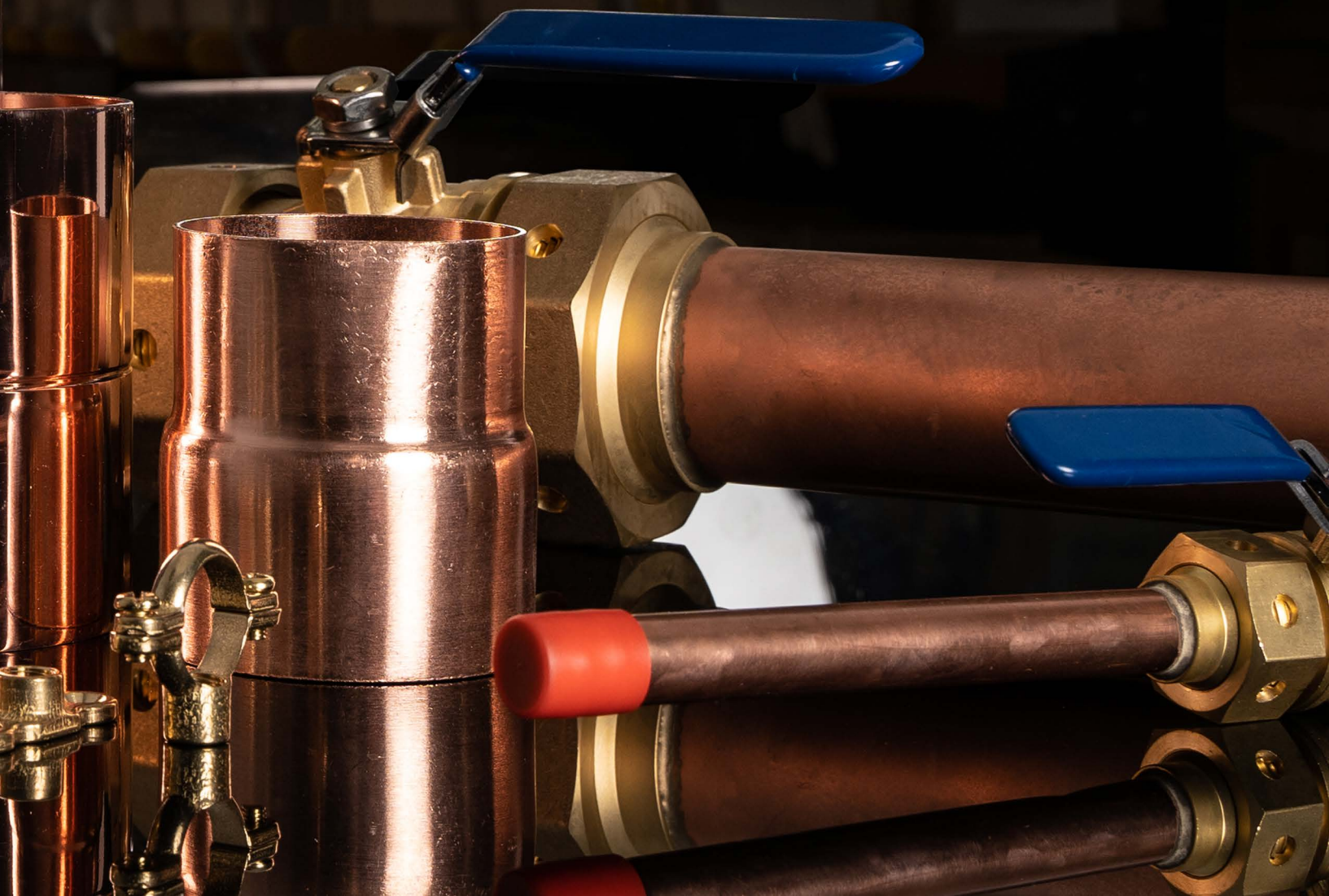
Email: [sales@lawtontubes.co.uk](mailto:sales@lawtontubes.co.uk)

Website: [www.lawtontubes.co.uk](http://www.lawtontubes.co.uk)

## Contents

### LAWTON PLUMBING Plumbing Range

Tubes.....	7
Press.....	12
End Feed.....	14
Solder Ring.....	17
Compression.....	20
Pipe Fixtures.....	25
Soldering Solutions.....	26





# LAWTON

PLUMBING

Plumbing Tube and Fittings

Lawton's plumbing and heating product range includes:

- Straight lengths
- Coils
- Fittings
- Plumbing Accessories

Demand Lawton's Copper for:

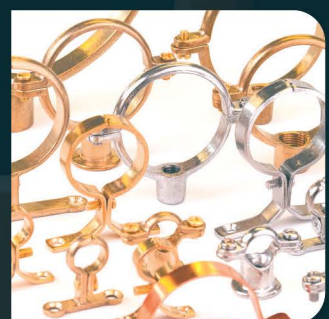
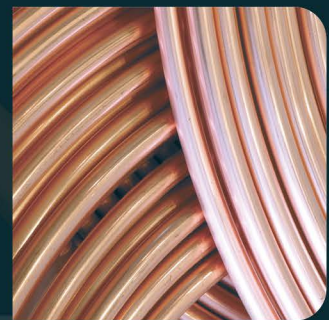
- Commercial and domestic plumbing and heating installations
- Hot and Cold water systems, including carrying potable water
- Commercial and domestic heating systems
- Sanitation systems
- General engineering applications

Lawton's Plumbing and Heating products were used in many prestigious projects including:

- Millennium Stadium
- UK Olympic Stadium and Village
- Celtic Manor Hotel
- Houses of Parliament

Demand Lawton Tubes for:

- Strength
- Quality
- Reliability





## Straight Lengths and Coils

Lawton Tubes supply EN1057 in plain tube and plain coils. Straight length copper tube is available in various lengths. Diameters range from 6mm for small domestic installations to 219mm, for large commercial projects. We also have stocks of large diameter tubes available for immediate despatch. We also stock a range of soft temper coils from 6mm-22mm

As an alternative to traditional 1.2mm thick EN1057, and providing you with considerable cost savings without compromising operating performance, we can also supply Lawton LiteX, a hard drawn, lightweight, kitemarked tube, available in 35 and 42mm\*.

Plain Straight Lengths TX  
BS EN 1057

**LAWTON**  
TABLE X

Size OD (mm)	Temper Hardness	Wall (mm)	Available in (metres)					
			1	1.5	2	3	6	
6mm	R250	0.6				•	•	
8mm	R250	0.6				•	•	
10mm	R250	0.6				•	•	
15mm	R250	0.7	•	•	•	•	•	
22mm	R250	0.9	•	•	•	•	•	
28mm	R250	0.9	•	•	•	•	•	
35mm	R250	1.2			•	•	•	
42mm	R250	1.2			•	•	•	
54mm	R290	1.2			•	•	•	
67mm	R290	1.2				•	•	
76mm	R290	1.5				•	•	
108mm	R290	1.5				•	•	
133mm	R290	1.5				•	•	
159mm	R290	2.0				•	•	
219mm	R290	3.0					•	

LiteX  
BS EN 1057

**LAWTON**  
LITEX

Size OD (mm)	Temper Hardness	Wall (mm)	Available in (metres)					
			1	1.5	2	3	6	
35mm	R290	1.0			•	•	•	
42mm	R290	1.0			•	•	•	

Plain Straight Lengths TY  
BS EN 1057

**LAWTON**  
TABLE V

Size OD (mm)	Temper Hardness	Wall (mm)	Available in (metres)					
			1	1.5	2	3	6	
6mm	R250	0.8				•	•	
8mm	R250	0.8				•	•	
10mm	R250	0.8				•	•	
15mm	R250	1.0				•	•	
22mm	R250	1.2				•	•	
28mm	R250	1.2				•	•	
35mm	R290	1.5				•	•	
42mm	R290	1.5				•	•	
54mm	R290	2.0				•	•	
67mm	R290	2.0				•	•	
76mm	R290	2.0				•	•	
108mm	R290	2.5				•	•	

Chrome Plated  
BS EN 1057 / BS EN 1456

**LAWTON**  
CHROME

Size OD (mm)	Temper Hardness	Wall (mm)	Available in (metres)					
			1	1.5	2	3	6	
15mm	R250	0.7	•	•	•	•		
22mm	R250	0.9			•	•		
28mm	R250	0.9				•		
35mm	R290	1.0				•		
42mm	R290	1.0				•		
54mm	R290	1.0				•		

Plain Coils TW  
BS EN 1057

**LAWTON**  
THICK-BORE

Size OD (mm)	Temper Hardness	Wall (mm)	Available in (metres)		
			10	25	50
6mm	R220	0.6		•	
8mm	R220	0.6	•	•	•
10mm	R220	0.7	•	•	•

Plain Coils TY  
BS EN 1057

**LAWTON**  
TABLE V

Size OD (mm)	Temper Hardness	Wall (mm)	Available in (metres)		
			10	25	50
15mm	R220	1.0		•	
22mm	R220	1.2		•	



All straight 15mm – 54mm Copper Tubes are stamped with:

- Tube size
- Kitemark
- EN1057
- Temper (hardness)
- Manufacturer
- Date (quarter)

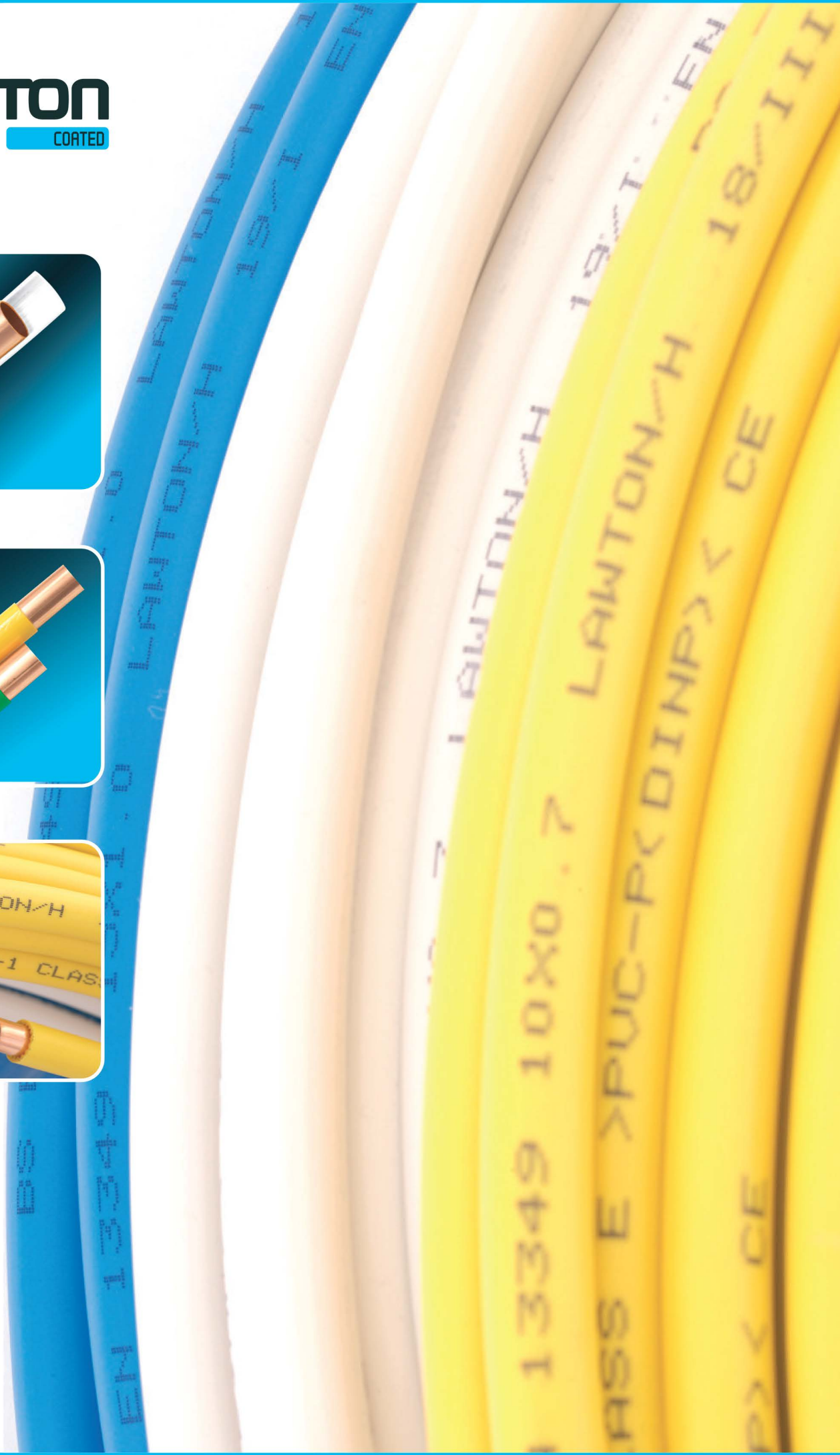
67mm tubes and above are stamped

\* As hard drawn, these tubes are unsuitable for bending in "as supplied" condition



# LAWTON

COATED



## Plastic Coated Straight Lengths and Coils

Lawton Tube plastic coated copper is manufactured to conform to BS EN 13349 / 1057. All tube is covered with a seamless plastic coating which protects the copper tube against abrasion and aggressive materials. The tube is also colour coded to fall in line with UK local authority specifications and BS 1710: 2014, "Specification for identification of pipelines and services".

Lawton Tubes supply plastic coated in straight lengths and coils which are covered under a 25 year guarantee against manufacturing defects. The straight lengths are available in a range of sizes including 3, 5.8 and 6 metre lengths. Coils are in 20, 25 and 50 metre options.

In addition to the current extensive range, Lawton Tube offer the flexibility to manufacture plastic coated copper in virtually any size or colour to meet individual specifications.

\*In accordance with BS 6700 all products should be designed, installed and used to the appropriate specification. For further details please see Lawton Tube technical guide for recommendations.

White Plastic Coated Copper Tubes  
BS EN 13349 / BS EN 1057

**LAWTON**  
COATED

Size (mm)	Temper Hardness	Wall (mm)	Available in (metres)		
			3	5.8	6
15mm	R250	0.7	•	•	•
22mm	R250	0.9	•	•	•
28mm	R250	0.9	•	•	•
35mm	R290	1.0	•	•	•
42mm	R290	1.0	•	•	•
54mm	R290	1.2	•	•	•
67mm	R290	1.2	•	•	•
76mm	R290	1.5	•	•	•
108mm	R290	1.5	•	•	•

PVC Coated Coils  
BS EN 13349 / BS EN 1057

**LAWTON**  
COATED

Size (mm)	Temper Hardness	Wall (mm)	Available in (metres)		
			20	25	50
8mm	R220	0.6		White	
10mm	R220	0.7		White/Yellow	White
15mm	R220	1.0		Yellow/Blue	
22mm	R220	1.2		Yellow/Blue	
28mm	R220	1.2	Yellow		

Yellow PVC Coated Tube  
BS EN 13349 / BS EN 1057

**LAWTON**  
COATED

Size (mm)	Temper Hardness	Wall (mm)	Available in (metres)		
			3	5.8	6
15mm	R250	0.7	•		•
22mm	R250	0.9	•		•
28mm	R250	0.9	•		•

Green Plastic Coated Copper Tubes  
BS EN 13349 / BS EN 1057

**LAWTON**  
COATED

Size (mm)	Temper Hardness	Wall (mm)	Available in (metres)		
			3	5.8	6
15mm	R250	1.0			•
22mm	R250	1.2			•
28mm	R250	1.2			•
35mm	R290	1.5			•
42mm	R290	1.5			•
54mm	R290	2.0			•
67mm	R290	2.0			•
76mm	R290	2.0			•
108mm	R290	2.5			•







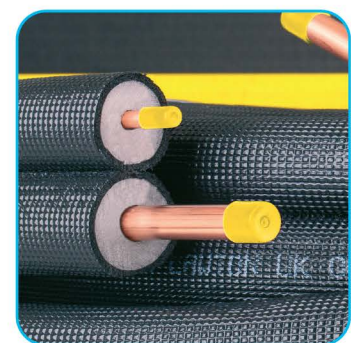
## Class B Fire Rated Coil

A fast and easy solution that meets the needs of Euroclass EN 13501-1 Rating of BL-s1,d0

- Backed by Lawton's reputation for quality, service and customer care for over 100 years.
- Meets European Building and Fire Safety Regulations
- PE Foam B rated insulation matched with Lawton Copper tube gives total product confidence
- Suitable for Heat Pump and Air Conditioning applications
- Available in 20mtr & 25mtr coils, in both 9mm and 13mm thickness
- Easy installation. No glue, tape or messy powder
- Using pre insulated coil achieves pipework installation in less than half the time of conventional methods
- New improved profile developed for easy splitting during installation

### Pair Coil

Part Number	Tube Dimensions	Insulation Thickness	Lengths	Pallet Qty (coils)
LPC1438CB-9MM	1/4" x 0.71mm & 3/8" x 0.81mm	9mm (3/8")	25m	11
LPC1412CB-9MM	1/4" x 0.71mm & 1/2" x 0.81mm	9mm (3/8")	25m	11
LPC1458CB-9MM	1/4" x 0.71mm & 5/8" x 0.91mm	9mm (3/8")	25m	11
LPC3858CB-9MM	3/8" x 0.81mm & 5/8" x 0.91mm	9mm (3/8")	25m	10
LPC1438CB-13MM	1/4" x 0.71mm & 3/8" x 0.81mm	13mm (1/2")	20m	11
LPC1412CB-13MM	1/4" x 0.71mm & 1/2" x 0.81mm	13mm (1/2")	20m	10
LPC1458CB-13MM	1/4" x 0.71mm & 5/8" x 0.91mm	13mm (1/2")	20m	10
LPC3858CB-13MM	3/8" x 0.81mm & 5/8" x 0.91mm	13mm (1/2")	20m	9



# LAWTON

## FITTINGS



# Fittings & Accessories

Lawton Tubes provides a comprehensive selection of high-quality plumbing fittings and accessories designed to meet a wide range of applications. Our offerings include press fittings, end feed fittings, brazing fittings, solder ring, standard compression, DZR compression, brass and chrome pipe rings, along with essential items like solder, soldering flux, and brazing rods.

Our innovative Lawton Press fittings are available in sizes ranging from 15-54mm, making them ideal for potable water, heating, and cooling systems. Backed by an industry-leading 30-year warranty, this product reflects our unwavering commitment to quality and reliability.

## Press fittings BS EN 1254-7



### Straight Coupler Press



Part Code	Size	Bag	Box
PFCP015	15mm	10	400
PFCP022	22mm	10	170
PFCP028	28mm	5	120
PFCP035	35mm	2	70
PFCP042	42mm	2	50
PFCP054	54mm	2	26
PFCP067	67mm	1	15
PFCP076	76.1mm	1	10
PFCP108	108mm	1	6

### Reducer Coupler Press



Part Code	Size	Bag	Box
PFCP02215	22 x 15 mm	10	200
PFCP02815	28 x 15 mm	5	150
PFCP02822	28 x 22 mm	5	120
PFCP03515	35 x 15 mm	2	80

### Female Adaptor Brass



Part Code	Size	Bag	Box
PFCPF0151/2	15mm x 1/2"	10	250
PFCPF0153/4	15mm x 3/4"	10	200
PFCPF0221/2	22mm x 1/2"	10	200
PFCPF0223/4	22mm x 3/4"	10	200
PFCPF0281	28mm x 1"	10	120
PFCPF03511/4	35mm x 1 1/4"	1	60
PFCPF04211/2	42mm x 1 1/2"	1	40
PFCPF0542	54mm x 2"	1	25

### Male Adaptor Brass



Part Code	Size	Bag	Box
PFCPMI0151/2	15mm x 1/2"	10	250
PFCPMI0153/4	15mm x 3/4"	10	200
PFCPMI0221/2	22mm x 1/2"	10	200
PFCPMI0223/4	22mm x 3/4"	10	200
PFCPMI0281	28mm x 1"	10	120
PFCPMI0283/4	28mm x 3/4"	10	120
PFCPMI03511/4	35mm x 1 1/4"	1	60
PFCPMI04211/2	42mm x 1 1/2"	1	40
PFCPMI0542	54mm x 2"	1	25

### 90 Degree Elbow Press



Part Code	Size	Bag	Box
PFEL015	15mm x 90	10	220
PFEL022	22mm x 90	10	120
PFEL028	28mm x 90	5	60
PFEL035	35mm x 90	2	40
PFEL042	42mm x 90	2	26
PFEL054	54mm x 90	2	12
PFEL067	67mm x 90	1	5
PFEL076	76.1mm x 90	1	3
PFEL108	108mm x 90	1	2

### 45 Degree Elbow Press



Part Code	Size	Bag	Box
PFEL01545	15mm x 45	10	300
PFEL02245	22mm x 45	10	150
PFEL02845	28mm x 45	5	70
PFEL03545	35mm x 45	2	50
PFEL04245	42mm x 45	2	30
PFEL05445	54mm x 45	2	12
PFEL06745	66.7mm x 45	1	6
PFEL07645	76.1mm x 45	1	3
PFEL10845	108mm x 45	1	2

### 45 Degree Street Elbow



Part Code	Size	Bag	Box
PFELS01545	15mm x 45	10	300
PFELS02245	22mm x 45	10	150
PFELS02845	28mm x 45	5	70
PFELS03545	35mm x 45	2	50
PFELS04245	42mm x 45	2	30
PFELS05445	54mm x 45	2	12
PFELS06745	66.7mm x 45	1	6
PFELS07645	76.1mm x 45	1	3
PFELS10845	108mm x 45	1	2

### 90 Degree Street Elbow



Part Code	Size	Bag	Box
PFELS015	15mm x 90	10	220
PFELS022	22mm x 90	10	120
PFELS028	28mm x 90	5	60
PFELS035	35mm x 90	2	40
PFELS042	42mm x 90	2	26
PFELS054	54mm x 90	2	12
PFELS067	66.7mm x 90	1	5
PFELS076	76.1mm x 90	1	3
PFELS108	108mm x 90	1	2

### Slip Coupler Press



Part Code	Size	Bag	Box
PFSC015	15mm	10	400
PFSC022	22mm	10	170
PFSC028	28mm	5	120
PFSC035	35mm	2	70
PFSC042	42mm	2	50
PFSC054	54mm	2	26
PFSC067	67mm	1	15



Reducer Press



Part Code	Size	Bag	Box
PFRED02215	22 x 15mm	10	250
PFRED02815	28 x 15mm	5	150
PFRED02822	28 x 22mm	5	150
PFRED03515	35 x 15mm	5	80
PFRED03522	35 x 22mm	2	80
PFRED03528	35 x 28mm	2	70
PFRED04215	42 x 15mm	2	50
PFRED04222	42 x 22mm	2	50
PFRED04228	42 x 28mm	2	50
PFRED04235	42 x 35mm	2	50
PFRED05415	54 x 15mm	2	36
PFRED05422	54 x 22mm	2	30
PFRED05428	54 x 28mm	2	30
PFRED05435	54 x 35mm	2	30
PFRED05442	54 x 42mm	2	30
PFRED06728	67 x 28mm	1	15
PFRED06735	67 x 35mm	1	15
PFRED06742	67 x 42mm	1	15
PFRED06754	66.7 x 54mm	1	15
PFRED07628	76.1 x 28mm	1	15
PFRED07635	76.1 x 35mm	1	15
PFRED07642	76.1 x 42mm	1	15
PFRED07654	76.1 x 54mm	1	15
PFRED07667	76.1 x 67mm	1	15
PFRED10828	108 x 28mm	1	6
PFRED10835	108 x 35mm	1	6
PFRED10842	108 x 42mm	1	6
PFRED10854	108 x 54mm	1	6
PFRED10867	108 x 66.7mm	1	6
PFRED10876	108 x 76.1mm	1	6

Reducer Tee Press



Part Code	Size	Bag	Box
PFTE0151522	15mm x 15mm x 22mm	10	100
PFTE0221515	22mm x 15mm x 15mm	10	100
PFTE0221522	22mm x 15mm x 22mm	10	60
PFTE0222215	22mm x 22mm x 15mm	10	100
PFTE0222228	22mm x 22mm x 28mm	10	60
PFTE0281515	28mm x 15mm x 15mm	5	60
PFTE0281522	28mm x 15mm x 22mm	5	50
PFTE0281528	28mm x 15mm x 28mm	5	50
PFTE0282215	28mm x 22mm x 15mm	5	50
PFTE0282222	28mm x 22mm x 22mm	5	50
PFTE0282228	28mm x 22mm x 28mm	5	50
PFTE0282815	28mm x 28mm x 15mm	5	60
PFTE0282822	28mm x 28mm x 22mm	5	50
PFTE0352222	35mm x 22mm x 22mm	5	30
PFTE0352235	35mm x 22mm x 35mm	5	25
PFTE0352822	35mm x 28mm x 22mm	5	30
PFTE0352835	35mm x 28mm x 35mm	5	25
PFTE0353515	35mm x 35mm x 15mm	2	30
PFTE0353522	35mm x 35mm x 22mm	2	30
PFTE0353528	35mm x 35mm x 28mm	2	24
PFTE0423535	42mm x 35mm x 35mm	2	30
PFTE0424215	42mm x 42mm x 15mm	2	24
PFTE0424222	42mm x 42mm x 22mm	2	24
PFTE0424228	42mm x 42mm x 28mm	2	24
PFTE0424235	42mm x 42mm x 35mm	2	20
PFTE0545415	54mm x 54mm x 15mm	2	16
PFTE0545422	54mm x 54mm x 22mm	2	12
PFTE0545428	54mm x 54mm x 28mm	2	12
PFTE0545435	54mm x 54mm x 35mm	2	10
PFTE0545442	54mm x 54mm x 42mm	2	10

Straight Swivel Connector



Part Code	Size	Bag	Box
PFSSC0151/2	15mm x 1/2"	10	200
PFSSC0223/4	22mm x 3/4"	10	150

End Cap Press



Part Code	Size	Bag	Box
PFEC015	15mm	10	600
PFEC022	22mm	10	400
PFEC028	28mm	5	220
PFEC035	35mm	2	100
PFEC042	42mm	2	70
PFEC054	54mm	2	50

Equal Tee Press



Part Code	Size	Bag	Box
PFTE015	15mm	10	150
PFTE022	22mm	10	70
PFTE028	28mm	5	35
PFTE035	35mm	2	26
PFTE042	42mm	2	20
PFTE054	54mm	2	10
PFTE067	66.7mm	1	5
PFTE076	76.1mm	1	4
PFTE108	108mm	1	1

Female Tee Brass



Part Code	Size	Bag	Box
PFTEF015151/2	15mm x 15mm x 1/2"	10	150
PFTEF022221/2	22mm x 22mm x 1/2"	10	100
PFTEF022223/4	22mm x 22mm x 3/4"	10	100
PFTEF028281	28mm x 28mm x 1"	10	50
PFTEF028281/2	28mm x 28mm x 1/2"	10	50

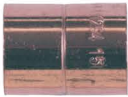


End-feed fittings  
BS EN 1254-1

**LAWTON**

END-FEED

Coupling



Part Code	Size	Bag	Box
EFCP008	8mm	10	5000
EFCP010	10mm	10	2400
EFCP015	15mm	25	2000
EFCP022	22mm	10	700
EFCP028	28mm	10	300
EFCP035	35mm	1	150
EFCP042	42mm	1	125
EFCP054	54mm	1	60
EFCP067	66.7mm	1	40
EFCP076	76.1mm	1	25
EFCP108	108mm	1	10
EFCP133	133mm	1	5
EFCP159	159mm	1	5
EFCP219	219mm	1	1

Metric to Imperial Coupling



EFCP0151/2	15mm x 1/2"	10	1200
EFCP0223/4	22mm x 3/4"	10	800
EFCP0281	28mm x 1"	10	250
EFCP03511/4	35mm x 1.1/4"	10	200

Long Tail Reducer



EFREDLT0158	15mm x 8mm	25	1000
EFREDLT01510	15mm x 10mm	25	1000

Reducer Coupling (C X C)



EFCP0108	10mm x 8mm	10	2000
EFCP0158	15mm x 8mm	10	2000
EFCP01510	15mm x 10mm	25	1200
EFCP01512	15mm x 12mm	10	1200
EFCP02215	22mm x 15mm	10	800
EFCP02815	28mm x 15mm	10	500
EFCP02822	28mm x 22mm	10	400
EFCP03515	35mm x 15mm	1	200
EFCP03522	35mm x 22mm	1	200
EFCP03528	35mm x 28mm	1	150
EFCP04215	42mm x 15mm	1	125
EFCP04222	42mm x 22mm	1	125
EFCP04228	42mm x 28mm	1	125
EFCP04235	42mm x 35mm	1	125
EFCP05415	54mm x 15mm	1	100
EFCP05422	54mm x 22mm	1	100
EFCP05428	54mm x 28mm	1	100
EFCP05435	54mm x 35mm	1	80
EFCP05442	54mm x 42mm	1	75
EFCP06754	66.7mm x 54mm	1	40
EFCP07635	76.1mm x 35mm	1	25
EFCP07642	76.1mm x 42mm	1	25
EFCP07654	76.1mm x 54mm	1	25
EFCP07667	76.1mm x 66.7mm	1	25
EFCP10876	108mm x 76.1mm	1	10

**LAWTON**

END-FEED

Slip Coupling



Part Code	Size	Bag	Box
EFSC015	15mm	25	1200
EFSC022	22mm	10	400
EFSC028	28mm	10	300
EFSC035	35mm	1	200
EFSC042	42mm	1	120
EFSC054	54mm	1	50

Fitting Reducer (FTG X C)



EFRED0108	10mm x 8mm	10	2000
EFRED0158	15mm x 8mm	10	2000
EFRED01510	15mm x 10mm	25	1800
EFRED02215	22mm x 15mm	10	800
EFRED02815	28mm x 15mm	10	400
EFRED02822	28mm x 22mm	10	300
EFRED03515	35mm x 15mm	1	200
EFRED03522	35mm x 22mm	1	200
EFRED03528	35mm x 28mm	1	150
EFRED04215	42mm x 15mm	1	150
EFRED04222	42mm x 22mm	1	125
EFRED04228	42mm x 28mm	1	125
EFRED04235	42mm x 35mm	1	100
EFRED05415	54mm x 15mm	1	100
EFRED05422	54mm x 22mm	1	100
EFRED05428	54mm x 28mm	1	100
EFRED05435	54mm x 35mm	1	80
EFRED05442	54mm x 42mm	1	80
EFRED06728	66.7mm x 28mm	1	50
EFRED06735	66.7mm x 35mm	1	50
EFRED06742	66.7mm x 42mm	1	50
EFRED06754	66.7mm x 54mm	1	50
EFRED07635	76.1mm x 35mm	1	50
EFRED07642	76.1mm x 42mm	1	40
EFRED07654	76.1mm x 54mm	1	40
EFRED07667	76.1mm x 66.7mm	1	25
EFRED10842	108mm x 42mm	1	10
EFRED10854	108mm x 54mm	1	10
EFRED10867	108mm x 66.7mm	1	10
EFRED10876	108mm x 76.1mm	1	10
EFRED13367	133mm x 66.7mm	1	10
EFRED13376	133 x 76.1mm	1	10
EFRED133108	133mm x 108mm	1	5
EFRED15976	159mm x 76.1mm	1	5
EFRED159108	159mm x 108mm	1	5
EFRED159133	159mm x 133mm	1	5
EFRED219159	219mm x 159mm	1	1





### 90 Degree Long Tail Street Elbow

Part Code	Size	Bag	Box
EFELSLT015	15mm	10	200
EFELSLT022	22mm	10	200

### 90 Degree Elbow



EFEL008	8mm	100	5000
EFEL010	10mm	25	4000
EFEL015	15mm	25	1500
EFEL022	22mm	25	500
EFEL028	28mm	10	200
EFEL035	35mm	1	125
EFEL042	42mm	1	70
EFEL054	54mm	1	40
EFEL067	66.7mm	1	20
EFEL076	76.1mm	1	20
EFEL108	108mm	1	5
EFEL133	133mm	1	2
EFEL159	159mm	1	2
EFEL219	219mm	1	1

### Long Radius Elbow



EFELLR015	15mm	10	600
EFELLR022	22mm	10	300
EFELLR028	28mm	10	100
EFELLR067	66.7mm	1	10
EFELLR076	76.1mm	1	5
EFELLR108	108mm	1	3

### 45 Degree Elbow



EFEL00845	8mm	10	1000
EFEL01045	10mm	10	800
EFEL01545	15mm	25	1500
EFEL02245	22mm	25	500
EFEL02845	28mm	10	300
EFEL03545	35mm	1	125
EFEL04245	42mm	1	100
EFEL05445	54mm	1	40
EFEL06745	66.7mm	1	20
EFEL07645	76.1mm	1	20
EFEL10845	108mm	1	5
EFEL13345	133mm	1	3
EFEL15945	159mm	1	2
EFEL21945	219mm	1	1

### 45 Degree Street Elbow



EFELS01545	15mm	25	1200
EFELS02245	22mm	25	500
EFELS02845	28mm	10	300
EFELS03545	35mm	1	125
EFELS04245	42mm	1	100
EFELS05445	54mm	1	40
EFELS06745	66.7mm	1	25
EFELS07645	76.1mm	1	20

### 90 Degree Street Elbow



EFELS015	15mm	25	1400
EFELS022	22mm	10	450
EFELS028	28mm	10	240
EFELS035	35mm	1	125
EFELS042	42mm	1	80
EFELS054	54mm	1	50

### Air Vent Cap



EFAV015	15mm	25	500
EFAV022	22mm	25	500

### Cylinder Union



EFCU0221	22mm x 1"	10	200
EFCU0281	28mm x 1"	10	200



### Straight Tap Connector

Part Code	Size	Bag	Box
EFSTC0151/2	15mm x 1/2"	10	800
EFSTC0153/4	15mm x 3/4"	10	600
EFSTC0223/4	22mm x 3/4"	10	400



### Bent Tap Connector

EFBTC0151/2	15mm x 1/2"	10	900
EFBTC0223/4	22mm x 3/4"	10	300



### Part Cross Overs

EFPC0015	15mm	5	400
EFPC0022	22mm	5	150



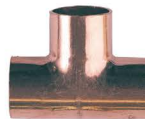
### Full Cross Overs

EFFC0015	15mm	5	400
EFFC0022	22mm	5	150
EFFC0028	28mm	5	90



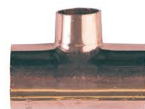
### End Cap

EFEC008	8mm	10	2000
EFEC010	10mm	10	2000
EFEC015	15mm	25	1800
EFEC022	22mm	10	1000
EFEC028	28mm	10	500
EFEC035	35mm	1	250
EFEC042	42mm	1	200
EFEC054	54mm	1	100
EFEC067	66.7mm	1	50
EFEC076	76.1mm	1	50
EFEC108	108mm	1	10
EFEC133	133mm	1	10
EFEC159	159mm	1	10



### Equal Tee

EFTE008	8mm	10	2000
EFTE010	10mm	10	1600
EFTE015	15mm	25	800
EFTE022	22mm	10	300
EFTE028	28mm	10	150
EFTE035	35mm	1	80
EFTE042	42mm	1	50
EFTE054	54mm	1	25
EFTE067	66.7mm	1	15
EFTE076	76.1mm	1	10
EFTE108	108mm	1	4
EFTE133	133mm	1	2
EFTE159	159mm	1	1
EFTE219	219mm	1	1



### Reducing Tee

EFTE0151510	15mm x 15mm x 10mm	10	500
EFTE0151522	15mm x 15mm x 22mm	10	500
EFTE0221515	22mm x 15mm x 15mm	10	400
EFTE0221522	22mm x 15mm x 22mm	10	300
EFTE0222215	22mm x 22mm x 15mm	10	300
EFTE0222228	22mm x 22mm x 28mm	10	100
EFTE0281515	28mm x 15mm x 15mm	10	200
EFTE0281528	28mm x 15mm x 28mm	10	150
EFTE0282215	28mm x 22mm x 15mm	10	150
EFTE0282222	28mm x 22mm x 22mm	10	150
EFTE0282228	28mm x 22mm x 28mm	10	150
EFTE0282815	28mm x 28mm x 15mm	10	150
EFTE0282822	28mm x 28mm x 22mm	10	150
EFTE0282835	28mm x 28mm x 35mm	10	80
EFTE0352222	35mm x 22mm x 22mm	1	125
EFTE0352822	35mm x 28mm x 22mm	1	100
EFTE0352828	35mm x 28mm x 28mm	1	80
EFTE0351535	35mm x 15mm x 35mm	1	100
EFTE0352235	35mm x 22mm x 35mm	1	100



Part Code	Size	Bag	Box
EFTE0353522	35mm x 35mm x 22mm	1	125
EFTE0353515	35mm x 35mm x 15mm	1	125
EFTE0353528	35mm x 35mm x 28mm	1	100
EFTE0352835	35mm x 28mm x 35mm	1	80
EFTE0421542	42mm x 15mm x 42mm	1	50
EFTE0422828	42mm x 28mm x 28mm	1	80
EFTE0422242	42mm x 22mm x 42mm	1	50
EFTE0422842	42mm x 28mm x 42mm	1	50
EFTE0423528	42mm x 35mm x 28mm	1	70
EFTE0423535	42mm x 35mm x 35mm	1	50
EFTE0423542	42mm x 35mm x 42mm	1	50
EFTE0424215	42mm x 42mm x 15mm	1	80
EFTE0424222	42mm x 42mm x 22mm	1	80
EFTE0424228	42mm x 42mm x 28mm	1	60
EFTE0424235	42mm x 42mm x 35mm	1	50
EFTE0545415	54mm x 54mm x 15mm	1	50
EFTE0545422	54mm x 54mm x 22mm	1	40
EFTE0545428	54mm x 54mm x 28mm	1	40
EFTE0545435	54mm x 54mm x 35mm	1	40
EFTE0544242	54mm x 42mm x 42mm	1	35
EFTE0544254	54mm x 42mm x 54mm	1	25
EFTE0545442	54mm x 54mm x 42mm	1	40
EFTE0676735	66.7mm x 66.7mm x 35mm	1	15
EFTE0676742	66.7mm x 66.7mm x 42mm	1	15
EFTE0676754	66.7mm x 66.7mm x 54mm	1	15
EFTE0676728	66.7mm x 66.7mm x 28mm	1	25
EFTE0767628	76.1mm x 76.1mm x 28mm	1	20
EFTE0767635	76.1mm x 76.1mm x 35mm	1	15
EFTE0767642	76.1mm x 76.1mm x 42mm	1	15
EFTE0767654	76.1mm x 76.1mm x 54mm	1	10
EFTE0767667	76.1mm x 76.1mm x 66.7mm	1	10
EFTE10810835	108mm x 108mm x 35mm	1	5
EFTE10810842	108mm x 108mm x 42mm	1	5
EFTE10810854	108mm x 108mm x 54mm	1	5
EFTE10810867	108mm x 108mm x 66.7mm	1	5
EFTE10810876	108mm x 108mm x 76.1mm	1	5
EFTE15915976	159mm x 159mm x 76.1mm	1	2
EFTE159159108	159mm x 159mm x 108mm	1	2
EFTE159159133	159mm x 159mm x 133mm	1	1

### Male Adaptor



EFCOMI0151/2	15mm x 1/2"	25	600
EFCOMI0151/4	15mm x 1/4"	3	600
EFCOMI0223/4	22mm x 3/4"	10	400
EFCOMI0281	28mm x 1"	10	300
EFCOMI03511/4	35mm x 1.1/4"	1	150
EFCOMI04211/2	42mm x 1.1/2"	1	150
EFCOMI0542	54mm x 2"	1	50
EFCOMI06721/2	66.7mm x 2.1/2"	1	35
EFCOMI0763	76mm x 3"	1	25
EFCOMI1084	108mm x 4"	1	10

### Female Adaptor



EFCOFI0151/2	15mm x 1/2"	25	600
EFCOFI0151/4	15mm x 1/4"	25	600
EFCOFI0153/4	15mm x 3/4"	25	600
EFCOFI0221/2	22mm x 1/2"	10	400
EFCOFI0223/4	22mm x 3/4"	10	400
EFCOFI0281	28mm x 1"	10	300
EFCOFI0283/4	28mm x 3/4"	10	150
EFCOFI03511/4	35mm x 1.1/4"	1	150
EFCOFI04211/2	42mm x 1.1/2"	1	75
EFCOFI0542	54mm x 2"	1	75
EFCOFI06721/2	66.7mm x 2.1/2"	1	50
EFCOFI0763	76mm x 3"	1	25
EFCOFI1084	108mm x 4"	1	10

### Male Elbow



Part Code	Size	Bag	Box
EFELMI0151/2	15mm x 1/2"	10	400
EFELMI0223/4	22mm x 3/4"	10	300
EFELMI0281	28mm x 1"	10	200

### Female Elbow



EFELFI0151/2	15mm x 1/2"	10	400
EFELFI0223/4	22mm x 3/4"	10	300
EFELFI0221/2	22mm x 1/2"	10	400
EFELFI0281	28mm x 1"	10	150

### Gas Wall Plate



EFELWC0151/2	15mm x 1/2"	10	200
--------------	-------------	----	-----

### Female Reducer Tee



EFELWL0151/2	15mm x 1/2"	10	400
EFELWL0223/4	22mm x 3/4"	10	150

### Wallplate Elbow



EFTEFI015151/2	15mm x 15mm x 1/2"	10	250
EFTEFI022221/2	22mm x 22mm x 1/2"	10	150
EFTEFI022223/4	22mm x 22mm x 3/4"	10	200
EFTEFI028281/2	28mm x 28mm x 1/2"	10	150
EFTEFI028281	28mm x 28mm x 1"	10	100

### Male Union Adaptor



EFUNM0151/2	15mm x 1/2"	10	400
EFUNM0223/4	22mm x 3/4"	10	200
EFUNM0281	28mm x 1"	10	140
EFUNM03511/4	35mm x 1.1/2"	5	30
EFUNM04211/2	42mm x 1.1/2"	5	50
EFUNM0542	54mm x 2"	5	25
EFUNM06721/2	67mm x 2.1/2"	1	25
EFUNM0763	76mm x 3"	1	15

Solder Ring Fittings  
BS EN 1254-1

**LAWTON**  
SOLDER RING

**LAWTON**  
SOLDER RING

Coupling



Part Code	Size	Bag	Box
SRCP008	8mm	50	3000
SRCP010	10mm	50	3000
SRCP015	15mm	50	1800
SRCP022	22mm	25	600
SRCP028	28mm	25	350
SRCP035	35mm	10	210
SRCP042	42mm	5	100
SRCP054	54mm	5	70

Reducing Coupler



SRCP02215	22mm x 15mm	50	800
SRCP02815	28mm x 15mm	25	600
SRCP02822	28mm x 22mm	25	350
SRCP04235	42mm x 35mm	5	120

Slip Coupling



SRSC015	15mm	50	1800
SRSC022	22mm	25	600
SRSC028	28mm	10	350

Straight Female Connector



SRCPMI0151/2	15mm x 1/2"	25	600
SRCPMI0223/4	22mm x 3/4"	25	400
SRCPMI0281	28mm x 1"	10	300
SRCPMI03511/4	35mm x 1 1/4"	5	150
SRCPMI04211/2	42mm x 1 1/2"	5	100
SRCPMI0542	52mm x 2"	2	70

Straight Male Connector



SRCPMI0151/2	15mm x 1/2"	25	600
SRCPMI0223/4	22mm x 3/4"	25	400
SRCPMI0281	28mm x 1"	10	300
SRCPMI03511/4	35mm x 1 1/4"	5	150
SRCPMI04211/2	42mm x 1 1/2"	5	100
SRCPMI0542	54mm x 2"	2	70

Fitting Reducer



SRRED0158	15mm x 8mm	25	1800
SRRED01510	15mm x 10mm	25	1800
SRRED02215	22mm x 15mm	25	900

Part Code	Size	Bag	Box
SRRED02815	28mm x 15mm	25	500
SRRED02822	28mm x 22mm	25	500
SRRED03515	35mm x 15mm	25	400
SRRED03522	35mm x 22mm	25	300
SRRED03528	35mm x 28mm	15	210
SRRED04215	42mm x 15mm	10	250
SRRED04222	42mm x 22mm	10	200
SRRED04228	42mm x 28mm	10	200
SRRED04235	42mm x 35mm	10	140
SRRED05415	54mm x 15mm	5	120
SRRED05422	54mm x 22mm	5	120
SRRED05428	54mm x 28mm	5	100
SRRED05435	54mm x 35mm	5	100
SRRED05442	54mm x 42mm	5	100

90 Degree Elbow



SREL008	8mm	50	1800
SREL010	10mm	50	1800
SREL015	15mm	50	1200
SREL022	22mm	25	400
SREL028	28mm	20	200
SREL035	35mm	10	120
SREL042	42mm	5	70
SREL054	54mm	2	36

45 Degree Elbow



SREL01545	15mm	50	1400
SREL02245	22mm	25	450
SREL02845	28mm	20	220
SREL03545	35mm	10	140
SREL04245	42mm	5	80
SREL05445	54mm	2	40

Wallplate Elbow



SRELB0151/2	15mm x 1/2"	25	400
-------------	-------------	----	-----

Male Elbow



SRELMI0151/2	15mm x 1/2"	25	400
--------------	-------------	----	-----





90 Degree Street Elbow



Part Code	Size	Bag	Box
SRELS015	15mm	25	1200
SRELS022	22mm	25	400
SRELS028	28mm	10	200

End Cap



SREC015	15mm	50	2200
SREC022	22mm	50	1000
SREC028	28mm	25	500
SREC035	35mm	10	250
SREC042	42mm	5	150
SREC054	54mm	2	120

Straight Tap Connector



SRSTC0151/2	15mm x 1/2"	25	300
SRSTC0153/4	15mm x 3/4"	25	300
SRSTC0223/4	22mm x 3/4"	25	200

Bent Tap Connector



SRBTC0151/2	15mm x 1/2"	25	300
SRBTC0223/4	22mm x 3/4"	25	200

Equal Tee



SRTE015	15mm	25	600
SRTE022	22mm	20	240
SRTE028	28mm	10	120
SRTE035	35mm	5	60
SRTE042	42mm	5	50
SRTE054	54mm	2	24

Reducing Tee



Part Code	Size	Bag	Box
SRTE0151522	15mm x 15mm x22mm	20	400
SRTE0221515	22mm x 15mm x 15mm	20	320
SRTE0221522	22mm x 15mm x 22mm	20	320
SRTE0222215	22mm x 22mm x 15mm	20	400
SRTE0281528	28mm x 15mm x 28mm	10	150
SRTE0282215	28mm x 22mm x15mm	10	200
SRTE0282222	28mm x 22mm x 22mm	10	200
SRTE0282228	28mm x 22mm x 28mm	10	150
SRTE0282815	28mm x 28mm x 15mm	10	160
SRTE0282822	28mm x 28mm x 22mm	10	200
SRTE0353515	35mm x 35mm x 15mm	5	100
SRTE0353522	35mm x 35mm x 22mm	5	95
SRTE0353528	35mm x 35mm x 28mm	5	95
SRTE0424215	42mm x 42mm x 15mm	5	80
SRTE0424222	42mm x 42mm x 22mm	5	80
SRTE0424228	42mm x 42mm x 28mm	5	65
SRTE0424235	42mm x 42mm x 35mm	3	45
SRTE0545415	54mm x 54mm x 15mm	3	45
SRTE0545422	54mm x 54mm x 28mm	3	45
SRTE0545428	54mm x 54mm x 28mm	3	45
SRTE0545435	54mm x 54mm x 35mm	3	30
SRTE0545442	54mm x 54mm x 42mm	3	30

Female Branch Reducing Tee



SRTEFI015151/2	15mm x 15mm x 1/2"	25	400
SRTEFI022221/2	22mm x 22mm x 1/2"	10	250
SRTEFI028281/2	28mm x 28mm x 1/2"	10	120



**Compression fittings  
BS EN 1254-2**



**Straight Coupling**



Part Code	Size	Bag	Box
COMCP008	8mm	20	600
COMCP010	10mm	20	500
COMCP015	15mm	10	300
COMCP022	22mm	10	150
COMCP028	28mm	10	90
COMCP035	35mm	5	50
COMCP042	42mm	2	36
COMCP054	54mm	1	24

**Straight Coupling - Chrome**



COMCP015CP	15mm	10	300
COMCP022CP	22mm	10	150
COMCP035CP	35mm	5	50
COMCP042CP	42mm	2	36

**Male Coupling**



COMCPMI0081/4	8mm x 1/4"	20	800
COMCPMI0101/4	10mm x 1/4"	20	800
COMCPMI0103/8	10mm x 3/8"	20	600
COMCPMI0151/2	15mm x 1/2"	10	300
COMCPMI0151/4	15mm x 1/4"	10	300
COMCPMI0153/4	15mm x 3/4"	10	200
COMCPMI0153/8	15mm x 3/8"	10	300
COMCPMI0221/2	22mm x 1/2"	10	200
COMCPMI0223/4	22mm x 3/4"	10	160
COMCPMI0221	22mm x 1"	10	150
COMCPMI0281	28mm x 1"	10	110
COMCPMI03511/4	35mm x 1 1/4"	5	50
COMCPMI04211/2	42mm x 1 1/2"	2	36
COMCPMI0542	54mm x 2"	1	24

**Male Coupling - Chrome**



COMCPMI0151/2CP	15mm x 1/2"	10	300
COMCPMI0223/4CP	22mm x 3/4"	10	150



**Female Coupling**



Part Code	Size	Bag	Box
COMCPFI0101/4	10mm x 1/4"	20	500
COMCPFI0151/2	15mm x 1/2"	10	300
COMCPFI0151/4	15mm x 1/4"	10	350
COMCPFI0153/4	15mm x 3/4"	10	250
COMCPFI0221	22mm x 1"	10	150
COMCPFI0221/2	22mm x 1/2"	10	200
COMCPFI0223/4	22mm x 3/4"	10	150
COMCPFI0281	28mm x 1"	10	100
COMCPFI03511/4	35mm x 1 1/4"	5	50
COMCPFI04211/2	42mm x 1 1/2"	2	40
COMCPFI0542	54mm x 2"	1	20

**Female Coupling - Chrome**



COMCPFI0151/2CP	15mm x 1/2"	10	300
COMCPFI0223/4CP	22mm x 3/4"	10	160

**Reducing Coupling**



COMCP01008	10mm x 8mm	20	500
COMCP01508	15mm x 8mm	10	300
COMCP01510	15mm x 10mm	10	300
COMCP01512	15mm x 12mm	10	300
COMCP02215	22mm x 15mm	10	200
COMCP02815	28mm x 15mm	10	120
COMCP02822	28mm x 22mm	10	120
COMCP03522	35mm x 22mm	5	60
COMCP03528	35mm x 28mm	5	60



Repair Coupling



Part Code	Size	Bag	Box
COMRCP015	15mm	10	120
COMRCP022	22mm	10	60

90 Elbow



COMEL008	8mm	20	500
COMEL010	10mm	20	400
COMEL015	15mm	10	250
COMEL022	22mm	10	120
COMEL028	28mm	10	70
COMEL035	35mm	5	30
COMEL042	42mm	2	20

90 Elbow - Chrome



COMEL015CP	15mm	10	250
COMEL022CP	22mm	10	120
COMEL035CP	35mm	5	30
COMEL042CP	42mm	2	20

Male Elbow



COMELMI0151/2	15mm x 1/2"	10	250
COMELMI0153/4	15mm x 3/4"	10	150
COMELMI0223/4	22mm x 3/4"	10	120
COMELMI0281	28mm x 1"	10	50
COMELMI03511/4	35mm x 1 1/4"	5	30

Male Elbow - Chrome



COMELMI0151/2CP	15mm x 1/2"	10	250
COMELMI0223/4CP	22mm x 3/4"	10	120

Female Elbow



COMELFI0151/2	15mm x 1/2"	10	250
COMELFI0153/4	15mm x 3/4"	10	250
COMELFI0221	22mm x 1"	10	70
COMELFI0221/2	22mm x 1/2"	10	120
COMELFI0223/4	22mm x 3/4"	10	100
COMELFI0281	28mm x 1"	10	70
COMELFI03511/4	35mm x 1 1/4"	5	30
COMELFI04211/2	42mm x 1 1/2"	2	20
COMELFI0542	54mm x 2"	1	18

Female Elbow - Chrome



Part Code	Size	Bag	Box
COMELFI0151/2CP	15mm x 1/2"	10	250
COMELFI0223/4CP	22mm x 3/4"	10	100
COMELFI0221CP	22mm x 1"	10	70

Reducing Elbow



COMRELO2215	22mm x 15mm	10	140
-------------	-------------	----	-----

Wallplate Elbow



COMELWL0151/2	15mm x 1/2"	10	120
COMELWL0223/4	22mm x 3/4"	10	80

Wallplate Elbow - Chrome



COMELWL0151/2CP	15mm x 1/2"	10	120
-----------------	-------------	----	-----

45° Elbow



COMEL01545	15mm	10	200
COMEL02245	22mm	10	100
COMEL02845	28mm	10	60

Equal Tee



Part Code	Size	Bag	Box
COMTE008	8mm	20	300
COMTE010	10mm	20	300
COMTE015	15mm	10	150
COMTE022	22mm	10	80
COMTE028	28mm	10	50
COMTE035	35mm	5	20
COMTE042	42mm	2	16
COMTE054	54mm	1	8

Equal Tee - Chrome



COMTE015CP	15mm	10	150
COMTE022CP	22mm	10	80
COMTE028CP	28mm	10	50
COMTE042CP	42mm	2	16

Reducing Tee



COMTE0151522	15mm x 15mm x 22mm	10	100
COMTE0221515	22mm x 15mm x 15mm	10	100
COMTE0221522	22mm x 15mm x 22mm	10	80
COMTE0222215	22mm x 22mm x 15mm	10	80
COMTE0281528	28mm x 15mm x 28mm	10	50
COMTE0282228	28mm x 22mm x 28mm	10	50
COMTE0282815	28mm x 28mm x 15mm	10	50
COMTE0282822	28mm x 28mm x 22mm	10	50

Reducing Tee - Chrome



COMTE0151522CP	15mm x 15mm x 22mm	10	100
COMTE0221515CP	22mm x 15mm x 15mm	10	100
COMTE0222215CP	22mm x 22mm x 15mm	10	80
COMTE022228CP	22mm x 22mm x 28mm	10	50

Female Tee



COMTEFI015151/2	15mm x 15mm x 1/2"	10	140
COMTEFI022221/2	22mm x 22mm x 1/2"	10	80
COMTEFI022223/4	22mm x 22mm x 3/4"	10	80
COMTEFI028281	28mm x 28mm x 1"	10	50

End Cap



Part Code	Size	Bag	Box
COMEC008	8mm	20	1000
COMEC010	10mm	20	1000
COMEC015	15mm	10	500
COMEC022	22mm	10	300
COMEC028	28mm	10	150
COMEC035	35mm	5	80
COMEC042	42mm	2	70
COMEC054	54mm	1	40

End Cap - Chrome



COMEC015CP	15mm	10	500
COMEC022CP	22mm	10	300
COMEC042CP	42mm	10	TBC

Taper Thread Coupling Male Iron Coupling



COMTTCPMI0151/2	15mm x 1/2"	10	300
COMETTCPMI0223/4	22mm x 3/4"	10	160
COMTTCPMI0281	28mm x 1"	10	110

Compression Nut



COMNUT010	10mm	10	100
COMNUT015	15mm	10	100
COMNUT028	28mm	10	100
COMNUT035	35mm	10	100
COMNUT042	42mm	10	100
COMNUT054	54mm	10	100
COMCR015	15mm	10	100

Crossover Tee



Part Code	Size	Bag	Box
COMCR022	22mm	10	60
COMCR028	28mm	10	30

Tank Connector



COMTC015	15mm	10	140
COMTC022	22mm	10	120
COMTC028	28mm	10	80
COMTC035	35mm	10	40
COMTC042	42mm	10	20
COMTC054	54mm	10	20

Straight Tap Connector



COMSTC0151/2	15mmx1/2"	10	250
COMSTC0153/4	15mmx3/4"	10	250

Bent Tap Connector



COMBTC0151/2	15mm x 1/2"	10	TBC
--------------	-------------	----	-----

Reducing Sets



Part Code	Size	Bag	Box
COMRS0108	10mm x 8mm	20	1000
COMRS0158	15mm x 8mm	20	1000
COMRS01510	15mm x 10mm	20	1000
COMRS02215	22mm x 15mm	10	500
COMRS02822	28mm x 22mm	10	350
COMRS03515	35mm x 15mm	5	150
COMRS03522	35mm x 22mm	5	200
COMRS03528	35mm x 28mm	5	250
COMRS04215	42mm x 15mm	5	100
COMRS04222	42mm x 22mm	5	100
COMRS04228	42mm x 28mm	5	100
COMRS04235	42mm x 35mm	5	100
COMRS05422	54mm x 22mm	5	250
COMRS05428	54mm x 28mm	5	250
COMRS05435	54mm x 35mm	5	250
COMRS05442	54mm x 42mm	5	80

Blanking Discs



COMBD015	15mm	10	700
COMBD022	22mm	10	500
COMBD028	28mm	10	300



### Copper Olives

**LAWTON**  
COMPRESSION

Part Code	Size	Bag	Box
COMOC008	8mm	400	10000
COMOC010	10mm	400	8000
COMOC015	15mm	250	4000
COMOC022	22mm	100	2000
COMOC028	28mm	50	1000
COMOC035	35mm	50	500
COMOC042	42mm	50	250
COMOC054	54mm	25	200
COMOC03/4	3/4"	100	2000



### Brass Olives

COMOB008	8mm	400	10000
COMOB010	10mm	400	8000
COMOB015	15mm	250	4000
COMOB022	22mm	100	2000
COMOB028	28mm	50	1000
COMOB035	35mm	50	500
COMOB042	42mm	50	250
COMOB054	54mm	25	200
COMOB03/4	3/4"	100	2000



## Pipe Fixings

**LAWTON**  
ACCESSORIES

### Pressed Screw On Bracket



Part Code	Size	Bag	Box
MUNBRP015	15mm	100	800
MUNBRP022	22mm	100	500
MUNBRP028	28mm	50	300
MUNBRP035	35mm	50	250
MUNBRP042	42mm	25	150
MUNBRP054	54mm	10	100

### Chrome Pressed Screw On Bracket



MUNBRPC015	15mm	100	800
MUNBRPC022	22mm	100	500
MUNBRPC028	28mm	50	300
MUNBRPC035	35mm	50	250
MUNBRPC042	42mm	25	150
MUNBRPC054	54mm	10	200

### Cast Screw On Bracket



MUNBRCC015	15mm	100	800
MUNBRCC022	22mm	50	450
MUNBRCC028	28mm	25	300
MUNBRCC035	35mm	25	250
MUNBRCC042	42mm	25	150
MUNBRCC054	54mm	25	100
MUNBRCC067	67mm	10	50
MUNBRCC076	76mm	10	40

### Chrome Cast Screw On Bracket



MUNBRCC015	15mm	100	800
MUNBRCC022	22mm	50	450
MUNBRCC028	28mm	25	300
MUNBRCC035	35mm	25	250
MUNBRCC042	42mm	25	150
MUNBRCC054	54mm	25	100

### Single Munsen Ring - M10



MUN012-M10	12mm	100	1000
MUN015-M10	15mm	100	900
MUN022-M10	22mm	50	700
MUN028-M10	28mm	50	450
MUN035-M10	35mm	50	300
MUN042-M10	42mm	25	250
MUN054-M10	54mm	25	150
MUN067-M10	67mm	10	110
MUN076-M10	76mm	10	80
MUN108-M10	108mm	5	50
MUN133-M10	133mm	5	20
MUN159-M10	159mm	3	15
MUN015-1/4	15mm	100	900

### Single Munsen Ring - 1/4"



**LAWTON**  
ACCESSORIES

Part Code	Size	Bag	Box
MUN022-1/4	22mm	50	600
MUN028-1/4	28mm	50	400
MUN035-1/4	35mm	25	300
MUN042-1/4	42mm	25	250

### Single Munsen Ring - 1/8"



MUN015-1/8	15mm	100	900
MUN022-1/8	22mm	50	700
MUN054-3/8	54mm	25	100
MUN067-3/8	67mm	10	100

### Chrome Single Munsen Ring



MUNC015-M10	15mm	10	900
MUNC022-M10	22mm	50	700
MUNC028-M10	28mm	10	450
MUNC035-M10	35mm	100	300
MUNC042-M10	42mm	25	250
MUNC054-M10	54mm	25	150

### Double Munsen Ring



MUND015-M10	15mm	50	800
MUND022-M10	22mm	100	600
MUND028-M10	28mm	25	400
MUND035-M10	35mm	25	200
MUND042-M10	42mm	50	150
MUND054-M10	54mm	100	100
MUND067-M10	67mm	100	260
MUND076-M10	76mm	3	50
MUND108-M10	108mm	10	25

### Double Tapped BSP



MUND015-1/4	15mm	100	600
MUND022-1/4	22mm	50	400
MUND028-1/4	28mm	50	300
MUND035-1/4	35mm	25	200
MUND042-1/4	42mm	25	150
MUND054-1/4	54mm	25	100

### Chrome Double Tapped BSP



MUNDC015-1/4	15mm	100	600
MUNDC022-1/4	22mm	50	400
MUNDTC015-1/4	15mm	50	450
MUNDTC022-1/4	22mm	50	400





## LAWTON

ACCESSORIES

### Chrome Dual Tapped BSP



Part Code	Size	Bag	Box
MUNDT028-1/4	28mm	25	300
MUNDT035-1/4	35mm	25	250

### Hospital Bracket



MUNS015	15mm	50	400
MUNS022	22mm	50	300
MUNS028	28mm	25	200
MUNS035	35mm	25	150
MUNS042	42mm	25	100
MUNS054	54mm	25	50

### Hospital Bracket - Chrome



MUNSC015	15mm	50	400
MUNSC022	22mm	50	300
MUNSC028	28mm	25	200

### Copper Saddle Bracket



EFSB015	15mm	100	1200
EFSB022	22mm	100	600
EFSB028	28mm	100	TBC

### Two Piece Saddle Band



EFSB2P022	22mm	100	1000
-----------	------	-----	------

### Two Piece Saddle Band - Chrome



EFSB2PC015	15mm	100	1000
------------	------	-----	------

### Female Backplate BSP



MUNBF010-M10	10mm	100	1500
MUNBF010-1/8	10mm	50	1500
MUNBF010-1/4	10mm	50	1000

### Female Backplate BSP - Chrome plated

MUNBFC010-M10	10mm	100	1500
MUNBM010-M10	10mm	100	1000
MUNBM010-1/8	10mm	50	1000
MUNBM010-1/4	10mm	50	500

## LAWTON

ACCESSORIES

### Male Backplate



Part Code	Size	Bag	Box
MUNBMC010-M10	10mm	100	1000

### Male Backplate - Chrome plated

### Rapid Fix - M10



MUNRF015-M10	15mm	100	900
MUNRF022-M10	22mm	100	700
MUNRF028-M10	28mm	100	450

### Soldering and Brazing Solutions Silver Solder (Brazing Rod)



Product Code	Size	%	Type
SOL-ZERO	1.27mm X 3.18mm X 508mm	0	Round
SOL-S2.0AG0.2	2.0mm X 500mm	0.2	Square
SOL-S1.5AG5	1.5mm X 500mm	5	Round
SOL-S1.5AG45	1.5mm X 500mm	45	Round
SOL-S1.5AG40FC	1.5mm X 500mm	40	Flux Coated
SOL-S1.5AG40	1.5mm X 500mm	40	Round
SOL-S1.5AG55	1.5mm X 500mm	55	Round
SOL-S2.0AG2	2.0mm X 500mm	5	Round
SOL-S2.0AG5	2.0mm X 500mm	2	Round
SOL-S2.5AG6	2.5mm X 500mm	6	Round
SOL-S2.5AG5	2.5mm X 500mm	5	Round
SOL-S2.5AG15	2.5mm X 500mm	15	Round
SOL-S2.5AG45	2.5mm X 500mm	45	Round
SOL-S2.5AG15(6)	2.5mm X 600mm	15	Round
SOL-S3.0AG2	3.0mm X 500mm	2	Round
SOL-S3.0AG5	3.0mm X 500mm	5	Round

### Solder Reels - Soft Soldering



Product Code	Size	%	Type
SOL-LF3.0	3.0mm 500G Lead-Free		Box 20
SOL-L3.0	3.0mm 500G Leaded		Box 20

### Flux for Soft Soldering



Product Code	Size	%	Type
SOL-FLF113	Flux 113G (4 Oz) With Brush		Box 90
SOL-FLF453	Flux 453G (16 Oz)		Box 12







# LAWTON

**TUBES**

*The nations copper specialist*

**The Lawton Tube Co. Ltd**  
Torrington Avenue, Coventry CV4 9AB

Telephone: +44 (0) 24 7646 6203

Fax: +44 (0) 24 7669 4183

E-mail: [sales@lawtontubes.co.uk](mailto:sales@lawtontubes.co.uk)

[www.lawtontubes.co.uk](http://www.lawtontubes.co.uk)